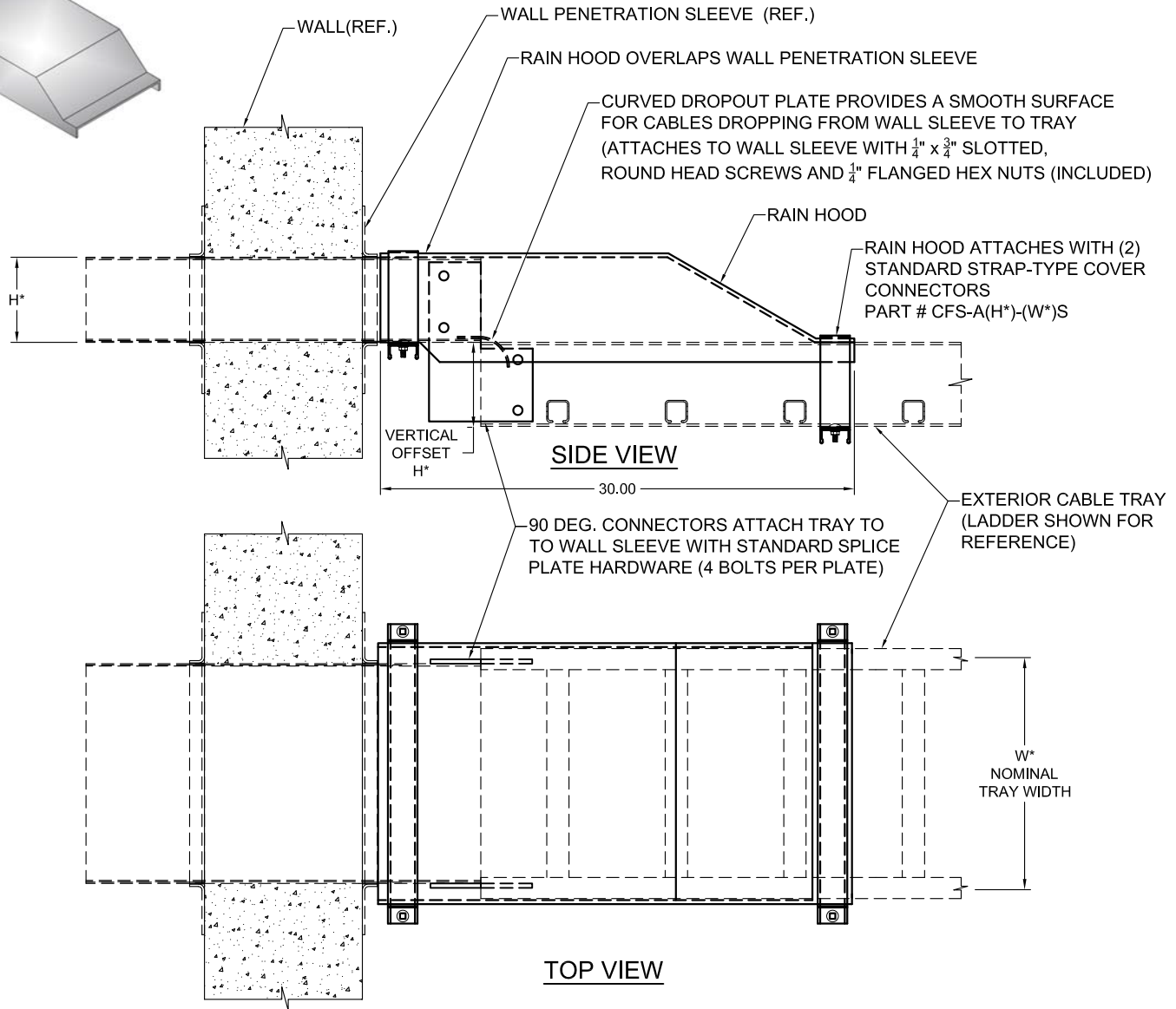




NO.	REVISION	BY	DATE
1	REVISED GENERAL DIMENSIONS	TM	05-22-12
2	REVISED OVERALL DESIGN, DIMENSIONS, SHAPE	TM	12-08-14
3	ADDED NOTE FOR VERTICAL OFFSET	WW	09-17-18

MATERIAL I.D.

RHP



NOTES:

1. COMPLETE ASSEMBLY CONSISTS OF (1) RAIN HOOD, (2) COVER CONNECTOR STRAPS WITH (4) $\frac{1}{4}$ " x $\frac{3}{4}$ " CARRIAGE BOLTS AND (4) $\frac{1}{4}$ " FLANGED HEX NUTS, (1) CABLE DROPOUT PLATE WITH (2) $\frac{1}{4}$ " x $\frac{3}{4}$ " SLOTTED ROUND HEAD SCREWS AND (2) $\frac{1}{4}$ " FLANGED HEX NUTS, AND (1) PAIR OF 90 DEGREE ELBOW CONNECTORS WITH (8) $\frac{3}{8}$ " x $\frac{3}{4}$ " RIBBED-NECK SCREWS AND (8) $\frac{3}{8}$ " FLANGED HEX NUTS. ALL HARDWARE IS TYPE 316 STAINLESS STEEL.
2. RAIN HOOD CONSTRUCTION IS ARC-WELDED.
3. RAIN HOODS ARE DESIGNED TO FIT U.S.P. WALL PENETRATION SLEEVES, REF. PART NO. WPS.
4. TRAYS, RAIN HOODS AND WALL PENETRATION SLEEVES ARE SUPPLIED SEPARATELY.
5. VERTICAL OFFSET IS EQUAL TO ACTUAL SIDE RAIL HEIGHT.

INSTALLATION:

1. INSTALL WALL PENETRATION SLEEVE INSIDE WALL.
2. ATTACH OUTDOOR TRAY TO WALL SLEEVE WITH (2) 90 DEGREE ELBOW CONNECTORS.
3. ATTACH DROPOUT PLATE TO EXTERIOR SIDE OF WALL SLEEVE.
4. PULL ALL ELECTRICAL CABLES AS NEEDED.
5. INSTALL RAIN HOOD AS SHOWN USING (2) COVER CONNECTOR STRAPS.

MATERIAL: RAIN HOOD IS ALUMINUM ALLOY 5052

NOTE: ALL DIMENSIONS ARE SUBJECT TO THE MANUFACTURING TOLERANCE SPECIFICATIONS IN DOCUMENT USP-QA-05-02.

ATKORE		SHEET NO. 1 OF 1
560 WHARTON CIRCLE, SUITE E ATLANTA, GA 30336 USA		PHONE: 404-696-8585 FAX: 404-696-8599
DESCRIPTION RAIN HOOD FOR OUTDOOR CABLE TRAY WALL PENETRATION		
CATALOG NUMBER	CATALOG NUMBER VARIABLES	
RHP-A-(H*)-(C*)-(W*)S	H* = NOMINAL TRAY SIDE RAIL HEIGHT IN INCHES (4, 5, 6, 7, 8) W* = NOMINAL WIDTH IN INCHES (06, 09, 12, 18, 24, 30, 36) C* = TRAY FITTING CLASS (1,2,3,4)	