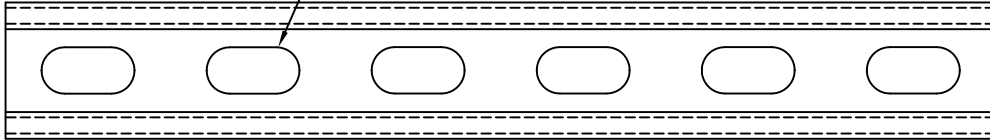




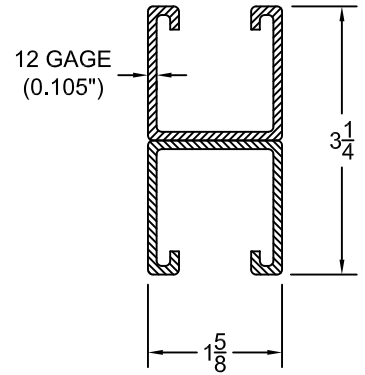
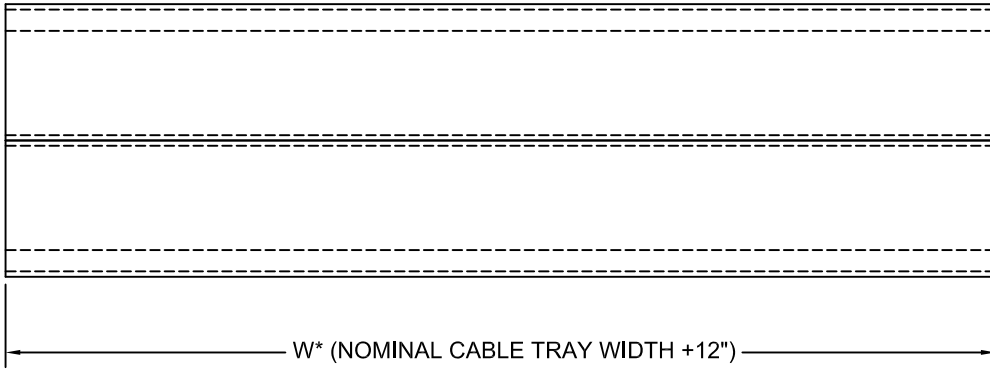
NO.	REVISION	BY	DATE	MATERIAL I.D.
0	APPROVED	TM	04-17-11	HCD
1	REVISED 9 INCH WIDTH DIMENSION, ADDED NOTE FOR SLOTS	WW	07-27-17	



9/16" x 1-1/8" OBLONG SLOT  
ON 2" CENTERS (TYPICAL)



STRUT IS CUT  
BETWEEN SLOTS.  
NEVER CUT THROUGH  
SLOTS



HANGER WIDTH (W*)		NOMINAL CABLE TRAY WIDTH	‡
18	18"	6"	
22	22"	9"	
24	24"	12"	
30	30"	18"	
36	36"	24"	
42	42"	30"	
48	48"	36"	

M*	HANGER MATERIAL & FINISH	‡
M	STEEL, MILL GALVANIZED / ASTM A653	
H	STEEL, HOT-DIP GALV. AFTER FAB. / ASTM A123	

‡ MARK "√" IN BOX TO  
INCLUDE IN SUBMITTAL

**NOTES:**

1. COMPLETE ASSEMBLY CONSISTS OF ONE HANGER CHANNEL ONLY. ALL FASTENERS ARE SUPPLIED SEPARATELY.
2. THIS CHANNEL IS TYPICALLY USED FOR THE ASSEMBLY OF TRAPEZE-TYPE CABLE TRAY SUPPORTS. SEE DRAWINGS FOR ITEM CODES SKTL AND SKTH FOR DETAILS ABOUT TRAPEZE-TYPE CABLE TRAY SUPPORTS.

**MATERIAL:** AS NOTED

NOTE: ALL DIMENSIONS ARE SUBJECT TO THE MANUFACTURING TOLERANCE SPECIFICATIONS IN DOCUMENT USP-QA-05-02.

<b>ATKORE</b>		SHEET NO. 1 OF 1
560 WHARTON CIRCLE, SUITE E ATLANTA, GA 30336 USA		PHONE: 404-696-8585 FAX: 404-696-8599
<b>DESCRIPTION</b> HANGER CHANNEL, DOUBLE STRUT		
<b>CATALOG NUMBER</b> HCD-(M*)-(W*)	<b>CATALOG NUMBER VARIABLES</b> M* = MATERIAL FINISH (M OR H) W* = OVERALL WIDTH IN INCHES (18, 22, 24, 30, 36, 42, 48)	