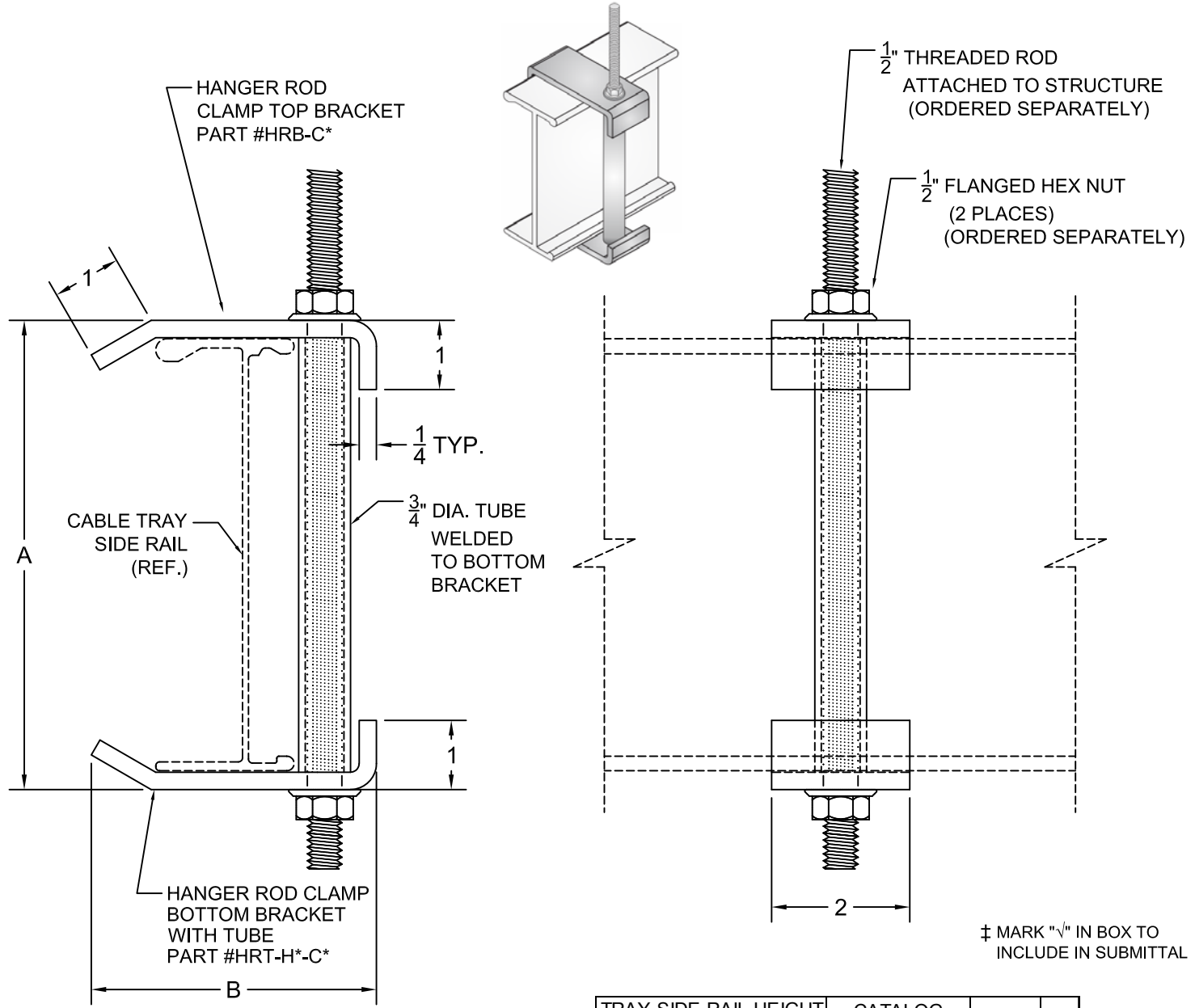


| NO. | REVISION | BY | DATE | MATERIAL I.D. |
|-----|----------|----|----------|---------------|
| 0 | APPROVED | TM | 06-08-11 | HRC |
| | | | | |
| | | | | |



‡ MARK "‡" IN BOX TO INCLUDE IN SUBMITTAL

| TRAY FITTING CLASS (C*) | TRAY TOP FLANGE WIDTH | B | ‡ |
|-------------------------|-----------------------|--------|---|
| 1 | 1-1/8" | 3-1/4" | |
| 2 | 2" | 4-1/8" | |
| 3 | 2-3/8" | 4-1/2" | |

| TRAY SIDE RAIL HEIGHT | | CATALOG NUMBER | A | ‡ |
|-----------------------|--------|----------------|--------|---|
| H* (NOMINAL) | ACTUAL | | | |
| 4 | 4.25" | HRC-Z4-(C*) | 4-3/4" | |
| 5 | 5.25" | HRC-Z5-(C*) | 5-3/4" | |
| 6 | 6.25" | HRC-Z6-(C*) | 6-3/4" | |
| 7 | 7.25" | HRC-Z7-(C*) | 7-3/4" | |

- NOTES:**
1. COMPLETE ASSEMBLY CONSISTS OF (1) TOP BRACKET AND (1) BOTTOM BRACKET WITH WELDED TUBE. FASTENERS ARE SUPPLIED SEPARATELY.
 2. INSTALL CLAMPS ON THE OUTSIDE OF BOTH TRAY SIDE RAILS OPPOSITE ONE ANOTHER.
 3. SAFE LOAD: 450 LBS. PER CLAMP.

MATERIAL: STEEL, COMMERCIAL-QUALITY ZINC PLATED PER ASTM B633

NOTE: ALL DIMENSIONS ARE SUBJECT TO THE MANUFACTURING TOLERANCE SPECIFICATIONS IN DOCUMENT USP-QA-05-02.

| | | |
|--|--|---|
| ATKORE | | SHEET NO. 1 OF 1 |
| 560 WHARTON CIRCLE, SUITE E ATLANTA, GA 30336 USA | | PHONE: 404-696-8585 FAX: 404-696-8599 |
| DESCRIPTION HANGER ROD CLAMP | | |
| CATALOG NUMBER HRC-Z(H*)-(C*) | | CATALOG NUMBER VARIABLES H*= NOMINAL TRAY SIDE RAIL HEIGHT IN INCHES (4, 5, 6, 7) C*= TRAY FITTING CLASS (1, 2, 3) |
| DIMENSIONS INCHES | | |