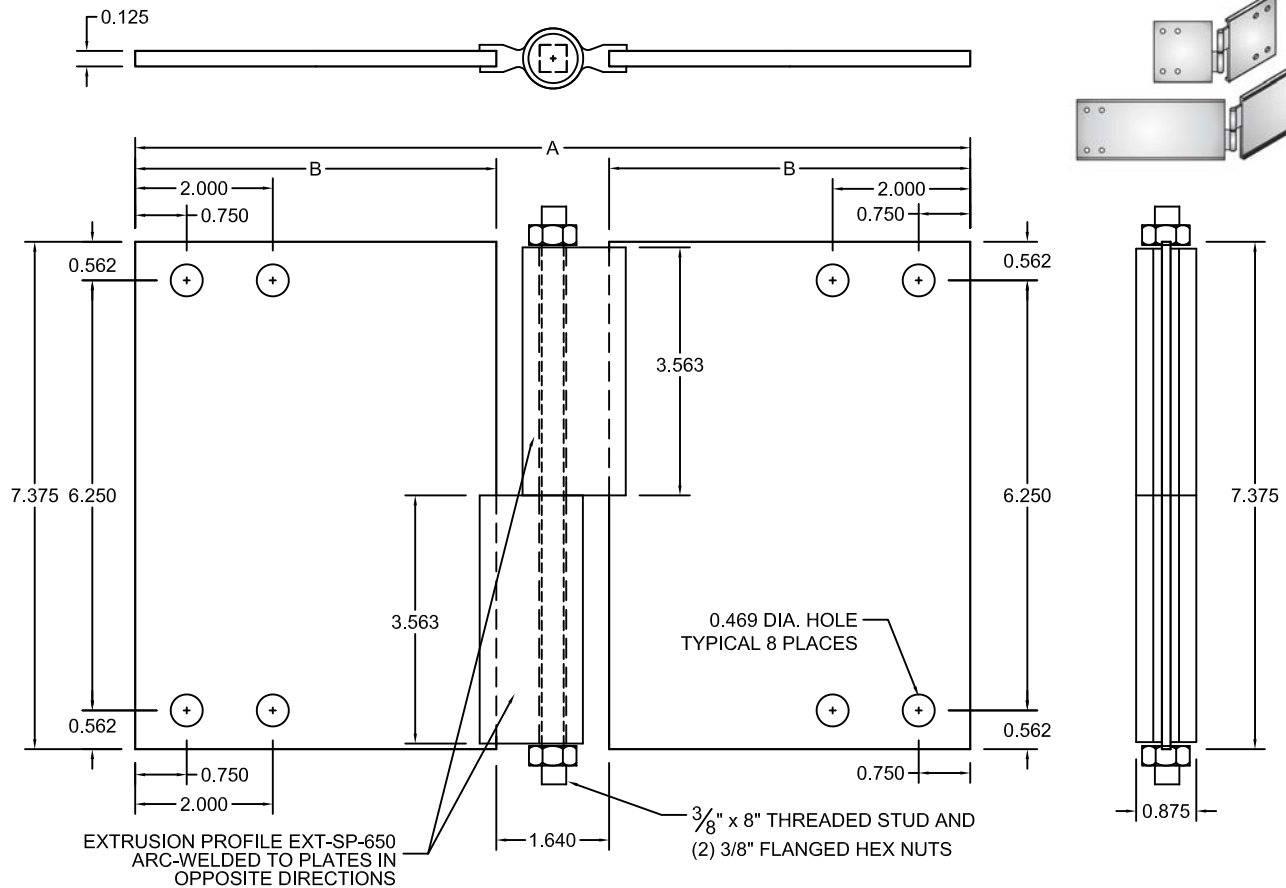




NO.	REVISION	BY	DATE	MATERIAL I.D.
0	APPROVED	TM	07-01-15	SPH-A8



INNER CONNECTOR PLATE: A = 12.14", B = 5.25"
OUTER CONNECTOR PLATE: A = 33.64", B = 16"

NOTES:

1. COMPLETE ASSEMBLY CONSISTS OF (1) 12-1/8" LONG INNER PLATE ASSEMBLY AND (1) 33-5/8" LONG OUTER PLATE ASSEMBLY WITH FASTENERS INDICATED.
2. THESE PLATES SWIVEL HORIZONTALLY AROUND THE THREADED STUD CONNECTING THE PLATES. THIS ALLOWS CABLE TRAYS TO BE JOINED AT ODD HORIZONTAL ANGLES UP TO 30 DEGREES.
3. INSTALL IN ACCORDANCE WITH NEMA STANDARD VE-2 CABLE TRAY INSTALLATION GUIDELINES.
4. THESE PLATES ARE DESIGNED FOR USE WITH CLASS 4 CABLE TRAY SYSTEM A820E.

±	F*	FASTENER MATERIAL	INCLUDED FASTENERS	FASTENER CATALOG NO.	QTY.
G	G	GEOMET-PLATED STEEL	3/8" x 3/4" RIBBED-NECK SCREW	F-RNS-38-34-G	16
			3/8" FLANGED HEX NUT	F-FHN-38-G	20
			3/8" x 9" THREADED STUD, STAINLESS STEEL	F-THS-38-9-S	2
S	S	TYPE 316 STAINLESS STEEL	3/8" x 3/4" RIBBED-NECK SCREW	F-RNS-38-34-S	16
			3/8" FLANGED HEX NUT	F-FHN-38-S	20
			3/8" x 9" THREADED STUD	F-THS-38-9-S	2

± MARK "√" IN BOX TO INCLUDE IN SUBMITTAL



CABLE TRAYS EMPLOYING THESE CONNECTORS ARE CLASSIFIED BY UNDERWRITERS LABORATORIES TO BE SUITABLE FOR USE AS EQUIPMENT GROUNDING CONDUCTORS. BONDING JUMPERS ARE NOT REQUIRED TO MAINTAIN GROUND PATH INTEGRITY. RESISTANCE ACROSS COUPLING IS LESS THAN 0.00033 OHMS. CERTIFIED BY U.L. TO MEET NEC. 392 AND NEMA STD. VE1, CSA-C22.2 NO. 126.1.

MATERIAL: ALUMINUM ALLOYS 5052-H32 AND 6063-T6

NOTE: ALL DIMENSIONS ARE SUBJECT TO THE MANUFACTURING TOLERANCE SPECIFICATIONS IN DOCUMENT USP-QA-05-02.

ATKORE

560 WHARTON CIRCLE, SUITE E ATLANTA, GA 30336 USA
 PHONE: 404-696-8585 FAX: 404-696-8599

SHEET NO. 1 OF 1

DIMENSIONS INCHES

DESCRIPTION
 HORIZ. ADJUSTABLE SPLICE PLATE - 8" HIGH, CLASS 4 TRAYS

CATALOG NUMBER
SPH-A8-(F*)8

CATALOG NUMBER VARIABLES
 F* = FASTENER MATERIAL (G OR S)