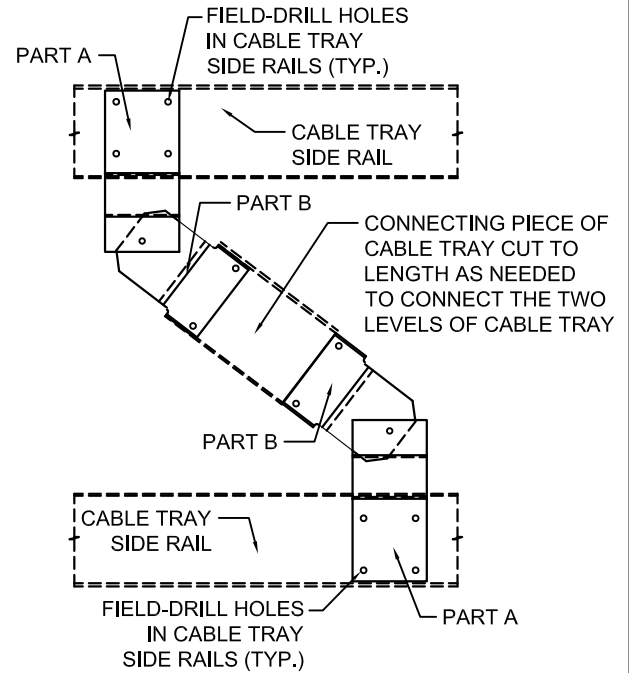
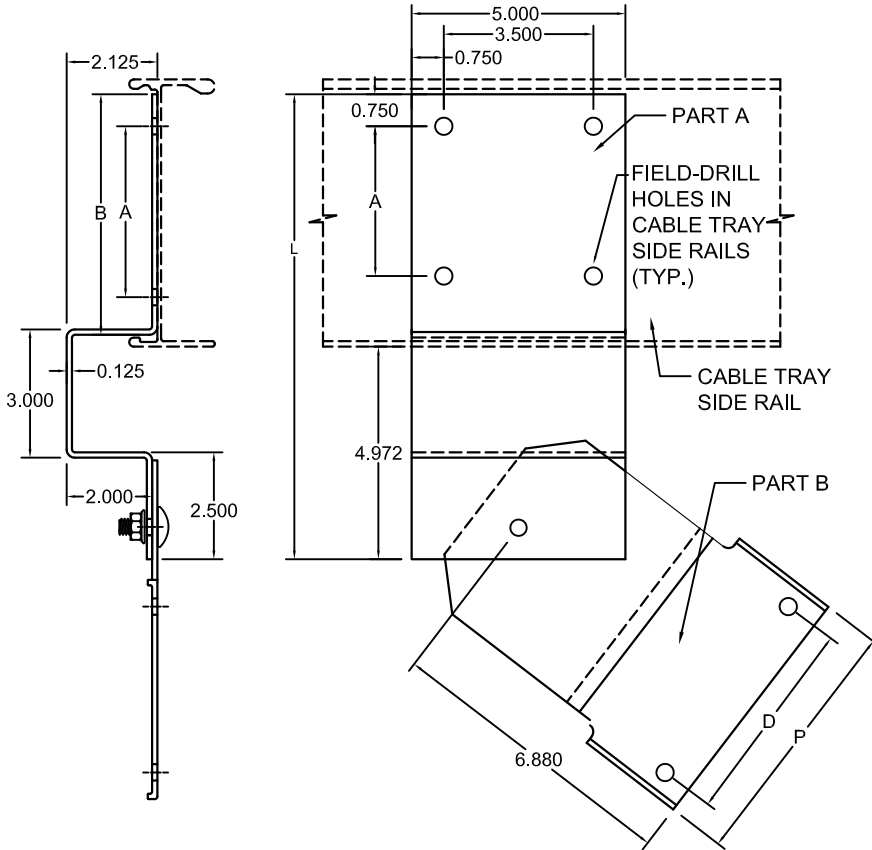




NO.	REVISION	BY	DATE	MATERIAL I.D.
0	APPROVED	WW	04-26-18	SPP



INSTALLATION SIDE VIEW

PRODUCT PROFILE VIEW

PRODUCT SIDE VIEW

TRAY SIDE RAIL HEIGHT		CATALOG NUMBER	A	B	P	D	L	EXTRUSION PROFILE	PLATE QTY.	‡
H* (NOMINAL)	ACTUAL									
4	4.25"	SPP-A4-(F*)4	1.5"	3.63"	3.87"	2.62"	8.87"	EXT-SP-604	2	
5	5.25"	SPP-A5-(F*)4	2.5"	4.63"	4.87"	3.62"	9.87"	EXT-SP-605	2	
6	6.25"	SPP-A6-(F*)4	3.5"	5.63"	5.87"	4.62"	10.87"	EXT-SP-606	2	
7	7.25"	SPP-A7-(F*)4	4.5"	6.63"	6.87"	5.62"	11.87"	EXT-SP-607	2	

NOTES:

1. THIS ASSEMBLY CONSISTS OF (2) OFFSET PLATES (PART A) AND (2) LEFT/RIGHT HALVES OF A STANDARD VERTICAL ADJUSTABLE CONNECTOR (PART B) AND (14) SETS OF STANDARD 3/8" SCREWS AND FLANGED HEX NUTS FOR SPLICES.

F*	FASTENER MATERIAL	INCLUDED FASTENERS	FASTENER CATALOG NO.	QTY.	‡
G	GEOMET-PLATED STEEL	3/8" x 3/4" RIBBED-NECK SCREW	F-RNS-38-34-G	14	
		3/8" FLANGED HEX NUT	F-FHN-38-G	14	
S	TYPE 316 STAINLESS STEEL	3/8" x 3/4" RIBBED-NECK SCREW	F-RNS-38-34-S	14	
		3/8" FLANGED HEX NUT	F-FHN-38-S	14	

ATKORE		SHEET NO. 1 OF 1
560 WHARTON CIRCLE, SUITE E ATLANTA, GA 30336 USA		PHONE: 404-696-8585 FAX: 404-696-8599
DESCRIPTION PIVOT CONNECTOR		
CATALOG NUMBER	CATALOG NUMBER VARIABLES	
SPP-A(H*)-(F*)4	H* = NOMINAL TRAY SIDE RAIL HEIGHT IN INCHES (4, 5, 6, 7) F* = FASTENER MATERIAL (G OR S)	

MATERIAL: 0.125 ALUMINUM SHEET 5052-H32

NOTE: ALL DIMENSIONS ARE SUBJECT TO THE MANUFACTURING TOLERANCE SPECIFICATIONS IN DOCUMENT USP-QA-05-02.