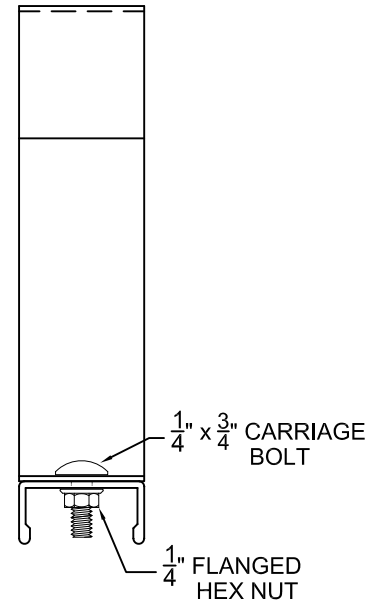
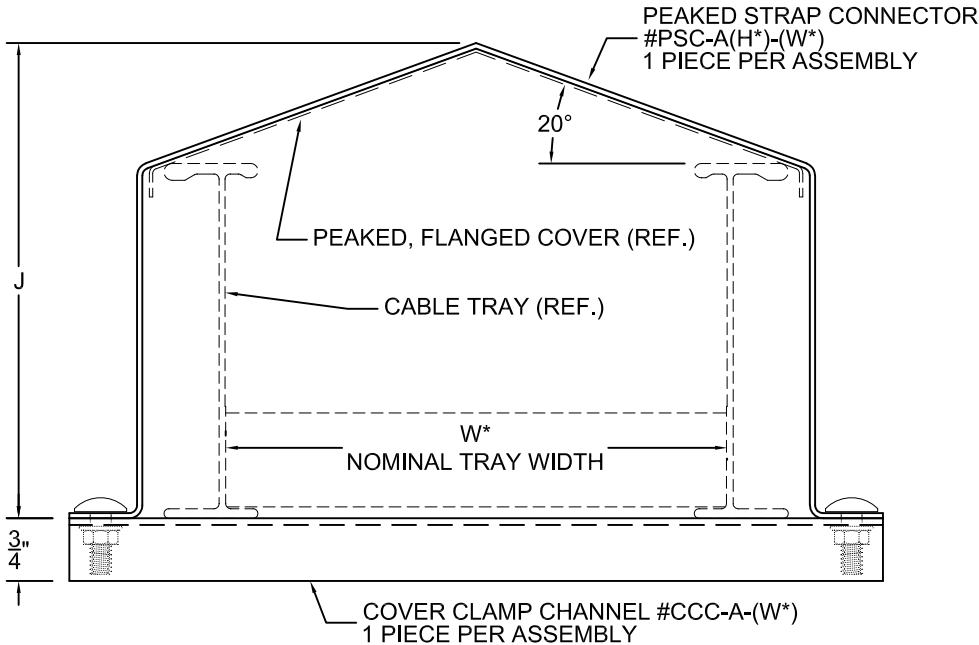
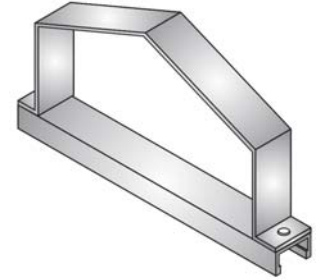
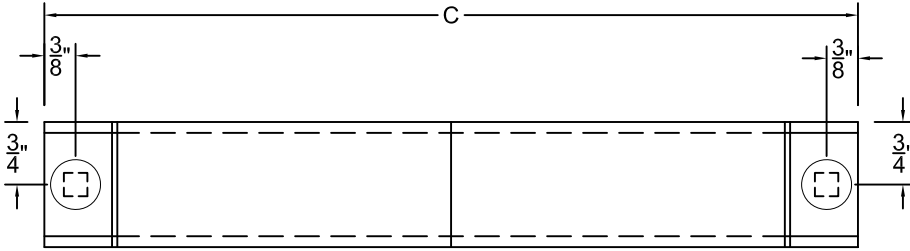




NO.	REVISION	BY	DATE	MATERIAL I.D.
0	APPROVED	TM	01-20-11	CPS
1	ADDED 8" HIGH OPTION, DELETED ZINC-PLATED	KD	01-31-18	



SIDE RAIL HEIGHT		CATALOG NUMBER	‡
H* (NOMINAL)	ACTUAL		
4	4.25"	CFS-A4-(W*)(F*)	
5	5.25"	CFS-A5-(W*)(F*)	
6	6.25"	CFS-A6-(W*)(F*)	
7	7.25"	CFS-A7-(W*)(F*)	
8	8.25"	CFS-A8-(W*)(F*)	

‡ MARK "√" IN BOX TO INCLUDE IN SUBMITTAL

WIDTH (W*)	C	J	‡
06	6"	9-3/4"	H*+1-9/16"
09	9"	12-3/4"	H*+2-1/8"
12	12"	15-3/4"	H*+2-21/32"
18	18"	21-3/4"	H*+3-3/4"
24	24"	27-3/4"	H*+4-27/32"
30	30"	33-3/4"	H*+5-15/16"
36	36"	39-3/4"	H*+7-1/32"

F*	FASTENER MATERIAL	INCLUDED FASTENERS	FASTENER CATALOG NO.	QTY.
S	TYPE 316 STAINLESS STEEL	1/4" x 3/4" CARRIAGE BOLT	F-SNC-14-75-S	2
		1/4" FLANGED HEX NUT	F-FHN-14-S	2

**NOTES:**

1. COMPLETE ASSEMBLY CONSISTS OF (1) COVER CLAMP CHANNEL (PART NO. CCC-A-W\*) AND (1) PEAKED STRAP CONNECTOR (PART NO. PSC-AH\*-W\*) WITH FASTENERS INDICATED.
2. THIS ITEM IS SUITABLE FOR USE WITH ALL PEAKED COVERS INSTALLED HORIZONTALLY, VERTICALLY, INDOORS, OR OUTDOORS.
3. INSTALL ON 36" TO 48" CENTERS ON STRAIGHT TRAYS AND FITTINGS.

**MATERIAL:** ALUMINUM 6063-T6 AND 5052-H32

NOTE: ALL DIMENSIONS ARE SUBJECT TO THE MANUFACTURING TOLERANCE SPECIFICATIONS IN DOCUMENT USP-QA-05-02.

<b>ATKORE</b>		SHEET NO. 1 OF 1
560 WHARTON CIRCLE, SUITE E ATLANTA, GA 30336 USA		PHONE: 404-696-8585 FAX: 404-696-8599
DESCRIPTION <b>COVER CLAMP - PEAKED STRAP</b>		
CATALOG NUMBER	CATALOG NUMBER VARIABLES	
<b>CPS-A(H*)-(W*)-S</b>	H* = TRAY HEIGHT INCHES (4, 5, 6, 7, 8) W* = TRAY WIDTH IN INCHES (06, 09, 12, 18, 24, 30, 36)	