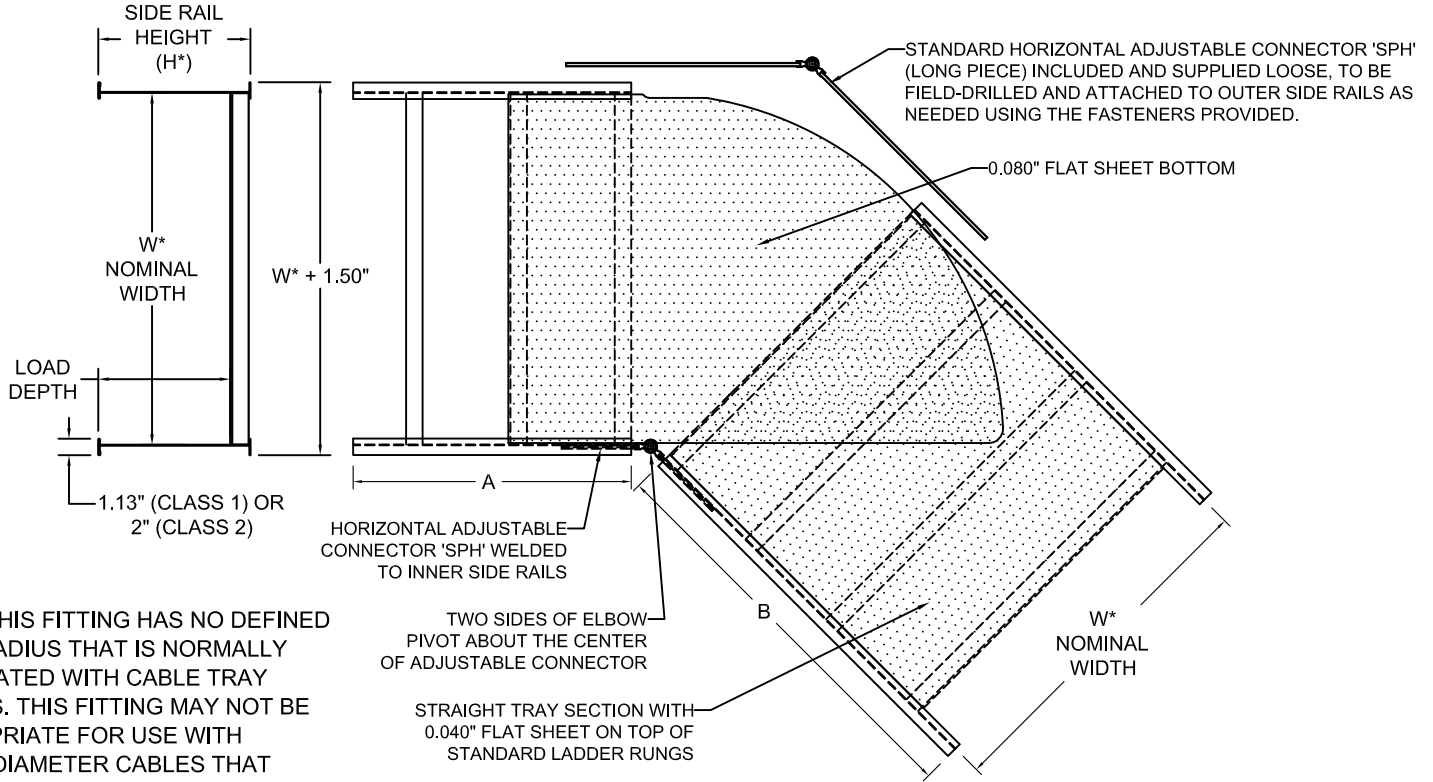




NO.	REVISION	BY	DATE	MATERIAL I.D.
0	APPROVED	TM	07-07-17	HAE



NOTE: THIS FITTING HAS NO DEFINED BEND RADIUS THAT IS NORMALLY ASSOCIATED WITH CABLE TRAY ELBOWS. THIS FITTING MAY NOT BE APPROPRIATE FOR USE WITH LARGE-DIAMETER CABLES THAT REQUIRE A LARGE BEND RADIUS.

	INCLUDED ITEMS	CATALOG NO.*	QTY.
	SPLICE PLATE, STANDARD 4 HOLES, 5-1/4" L SUPPLIED IN PAIRS	SPS-A(H*)-(G OR S)4	1 PR.
	RIBBED-NECK SCREW PHILLIPS RECESS 3/8" DIA. x 3/4" LONG	F-RNS-38-34-(G OR S)	12 EA.
	FLANGED HEX NUT 3/8" DIA., SERRATED FACE 9/16" SOCKET SIZE	F-FHN-38-(G OR S)	12 EA.

(H*) = NOMINAL SIDE RAIL HEIGHT (4, 5, 6, OR 7)

SPLICE PLATES: NECESSARY SPLICE CONNECTORS AND FASTENERS ARE AUTOMATICALLY SUPPLIED WITH ALL TRAYS. SPLICE RESISTANCE IS LESS THAN 0.00033 OHMS. FASTENER FINISHES ARE GEOMET-PLATED STEEL (G) AND TYPE 316 STAINLESS STEEL (S).



CLASSIFIED BY UNDERWRITERS LABORATORIES AS TO ITS SUITABILITY AS AN EQUIPMENT GROUNDING CONDUCTOR ONLY PER NEC 392. METAL CABLE TRAY IN ACCORDANCE WITH THE STANDARD FOR CABLE TRAY SYSTEMS CAN/CSA-C22.2 NO. 126 (UL FILE NO. E341872)

MATERIAL: ALUMINUM ALLOYS 6063 AND 5052

FINISH: PLAIN

TRAY TYPE: LADDER, TWO RAILS

BOTTOM: 1.13" WIDE RUNGS, 0.040" AND 0.080" FLAT SHEET

CONSTRUCTION: ARC-WELDED ON BOTH SIDES OF RUNGS

FITTING CLASS: 1 (1.13" FLANGES) OR 2 (2" FLANGES)

TANGENTS: N/A

THIS CABLE TRAY SYSTEM IS IN FULL COMPLIANCE WITH ALL ASPECTS OF THE LATEST REVISIONS OF NEMA STANDARD VE1, CSA C22.2 NO. 126 AND THE NATIONAL ELECTRIC CODE ARTICLE 392.

CATALOG NUMBERS ‡ MARK "√" IN BOX TO INCLUDE IN SUBMITTAL

MATERIAL
A ALUMINUM

EXAMPLE: A62 - 09 - HAE - 12 - G

SIDE RAIL HEIGHT	LOAD DEPTH ‡	FITTING CLASS ‡	RUNG SPACING ‡	FASTENER FINISH ‡
4	3"	1	6"	G
5	4"	1	9"	G
6	5"	2	12"	G
7	6"	2	12"	S

‡	ITEM CODE - WIDTH	DIMENSIONS (INCHES)		
		W	A	B
	HAE - 06	6	19	19
	HAE - 09	9	19	19
	HAE - 12	12	19	19
	HAE - 18	18	19	19
	HAE - 24	24	19	28
	HAE - 30	30	19	40
	HAE - 36	36	19	40

ATKORE

560 WHARTON CIRCLE, SUITE E ATLANTA, GA 30336 USA PHONE: 404-696-8585 FAX: 404-696-8599

SHEET NO. 1 OF 1

DIMENSIONS INCHES

DESCRIPTION

HORIZONTAL ADJUSTABLE ELBOW FITTING, LADDER TYPE, CLASS 1 AND 2

DRAWING NUMBER

USP-HAE-LADDER-1-2