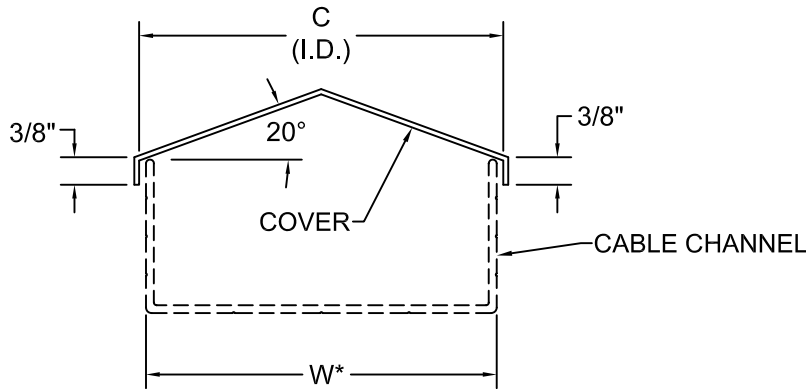
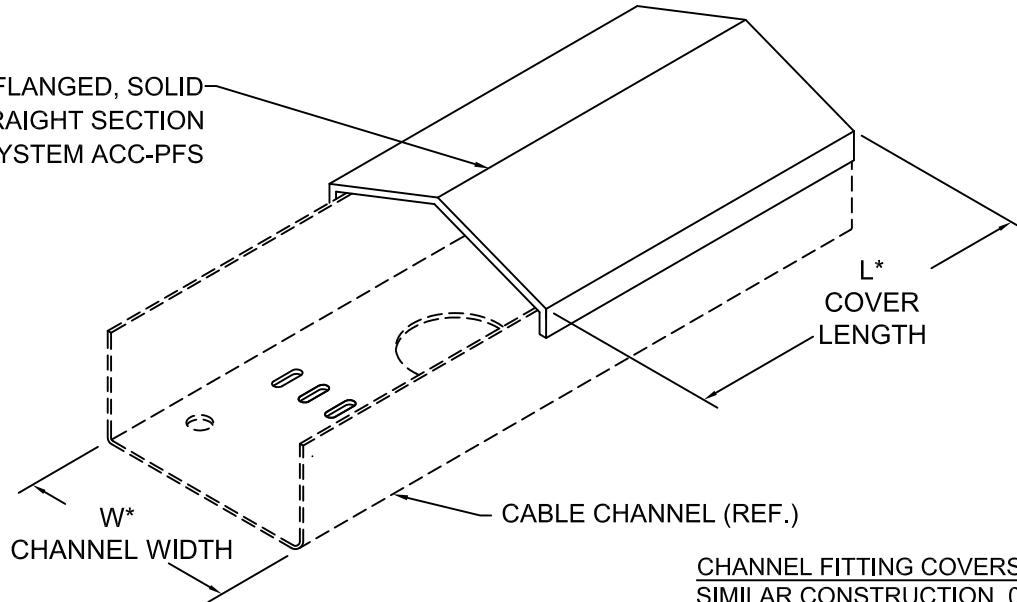


NO.	REVISION	BY	DATE	MATERIAL I.D.
0	APPROVED	TM	06-29-16	ACC-PFS
1	ADDED BLANK SIZES	WW	06-04-18	

PEAKED, FLANGED, SOLID
COVER STRAIGHT SECTION
ALUMINUM SYSTEM ACC-PFS



COVER AND CHANNEL
CROSS-SECTION

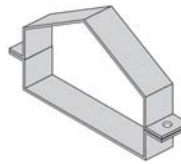
CHANNEL FITTING COVERS:
SIMILAR CONSTRUCTION. 0.063"
THICK MATERIAL IS STANDARD
FOR FITTINGS. OVERALL
DIMENSIONS AND SHAPES MATCH
THE FITTINGS.

ALTERNATE COVER THICKNESSES:
OTHER COVER THICKNESSES ARE
AVAILABLE. CONSULT FACTORY
FOR MORE INFORMATION.

BLANK SIZES:
3": 4-1/8"
4": 5-1/4"
6": 7-1/4"

COVER CONNECTOR CLAMPS
INDOOR, OUTDOOR, AND
VERTICAL USE
(ORDERED SEPARATELY)

CLAMP TYPE CATALOG NO. (EACH)



CPS-AC-(W*)S

W* = NOMINAL CHANNEL WIDTH IN INCHES (03, 04, 06)
FASTENER MATERIAL IS TYPE 316 STAINLESS STEEL

‡	CATALOG NUMBER	CHANNEL WIDTH W*	COVER	
			WIDTH C	LENGTH L*
	ACC-PFS-SL06-03-040	3	3-1/8"	06 6'-0"
	ACC-PFS-SL06-04-040	4	4-1/8"	06 6'-0"
	ACC-PFS-SL06-06-040	6	6-1/8"	06 6'-0"
	ACC-PFS-SL10-03-040	3	3-1/8"	10 10'-0"
	ACC-PFS-SL10-04-040	4	4-1/8"	10 10'-0"
	ACC-PFS-SL10-06-040	6	6-1/8"	10 10'-0"
	ACC-PFS-SL12-03-040	3	3-1/8"	12 12'-0"
	ACC-PFS-SL12-04-040	4	4-1/8"	12 12'-0"
	ACC-PFS-SL12-06-040	6	6-1/8"	12 12'-0"

‡ MARK "✓" IN BOX TO INCLUDE IN SUBMITTAL

MATERIAL: ALUMINUM ALLOY 3003, 0.040" THICK

NOTE: ALL DIMENSIONS ARE SUBJECT TO THE MANUFACTURING
TOLERANCE SPECIFICATIONS IN DOCUMENT USP-QA-05-02.

ATKORE

560 WHARTON CIRCLE, SUITE E PHONE: 404-696-8585
ATLANTA, GA 30336 USA FAX: 404-696-8599

SHEET NO.
1 OF 1
DIMENSIONS
INCHES

DESCRIPTION

CHANNEL COVER, PEAKED, FLANGED, SOLID

CATALOG NUMBER

ACC-PFS-SL(L*)-(W*)-040

CATALOG NUMBER VARIABLES

L* = LENGTH IN FEET (06, 10, 12)
W* = CHANNEL WIDTH IN
INCHES (03, 04, 06)