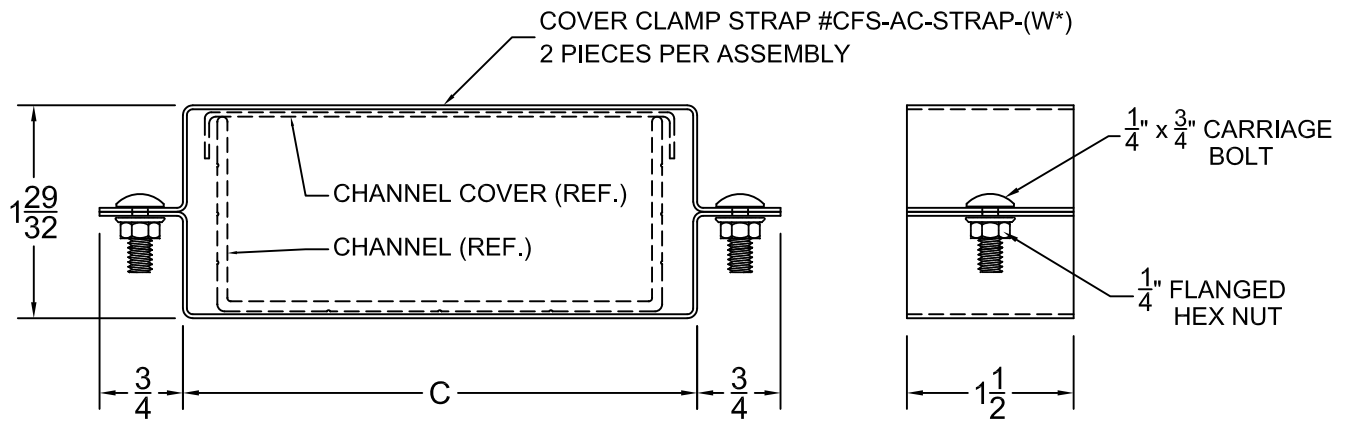
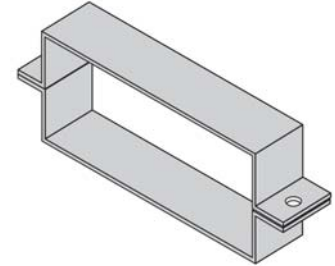
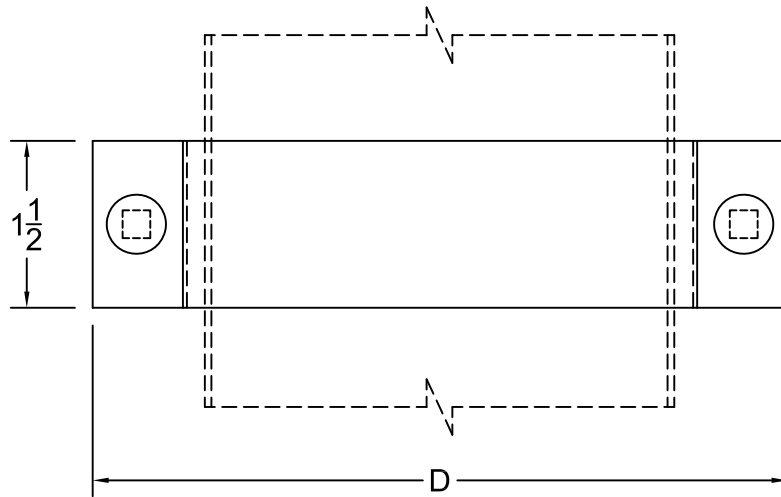




NO.	REVISION	BY	DATE	MATERIAL I.D.
0	APPROVED	TM	04-17-15	CFS-AC



	FASTENER MATERIAL	INCLUDED FASTENERS	FASTENER CATALOG NO.	QTY.
S	TYPE 316 STAINLESS STEEL	1/4" x 3/4" CARRIAGE BOLT	F-SNC-14-75-S	2
		1/4" FLANGED HEX NUT	F-FHN-14-S	2

‡ MARK "√" IN BOX TO INCLUDE IN SUBMITTAL

CHANNEL WIDTH	CATALOG NUMBER	C* INCHES	D* INCHES	‡
W*				
3"	CFS-AC-03-(F*)	3.50"	5.00"	
4"	CFS-AC-04-(F*)	4.50"	6.00"	
6"	CFS-AC-06-(F*)	6.50"	8.00"	

NOTES:

1. COMPLETE ASSEMBLY CONSISTS OF (2) COVER CLAMP STRAPS (PART NO. CCS-AC-STRAP-W*) AND FASTENERS INDICATED.
2. THIS ITEM IS SUITABLE FOR USE WITH ALL FLAT, NON-PEAKED COVERS INSTALLED HORIZONTALLY, VERTICALLY, INDOORS, OR OUTDOORS.
3. INSTALL ON 36" TO 48" CENTERS ON STRAIGHT CHANNEL SECTIONS.
4. ON FITTINGS, INSTALL TWO ON ELBOWS, THREE ON TEES AND 4 ON CROSSES.

MATERIAL: ALUMINUM ALLOY 5052-H32, 0.063" THICK

NOTE: ALL DIMENSIONS ARE SUBJECT TO THE MANUFACTURING TOLERANCE SPECIFICATIONS IN DOCUMENT USP-QA-05-02.

ATKORE		SHEET NO. 1 OF 1
560 WHARTON CIRCLE, SUITE E ATLANTA, GA 30336 USA		PHONE: 404-696-8585 FAX: 404-696-8599
DESCRIPTION COVER CONNECTOR STRAP ASSEMBLY FOR CHANNEL		
CATALOG NUMBER	CATALOG NUMBER VARIABLES	
CFS-AC-(W*)S	W*= CHANNEL WIDTH IN INCHES (03, 04, 06)	